



InnoTrans 2016

20–23 SEPTEMBER · BERLIN

International Trade Fair for Transport Technology
Innovative Components · Vehicles · Systems

innotrans.com

Trade Visitor Flyer



English

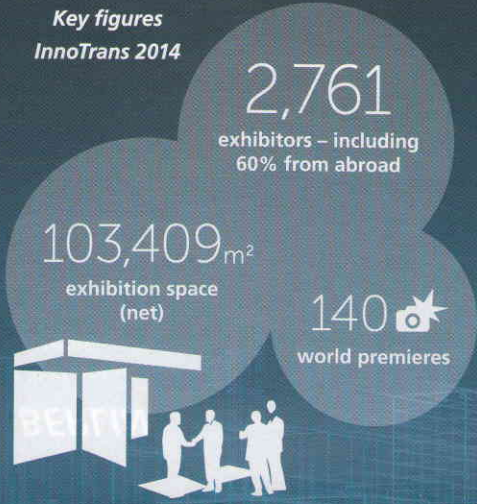
**THE FUTURE OF
MOBILITY**

GREEN LIGHT FOR GROUND-BREAKING VISIONS

Featuring 41 exhibition halls and a unique Outdoor Display, InnoTrans is the leading international trade fair for transport technology. This is where inspiring innovations and ground-breaking world debuts have been adding a valuable driving force to the global rail industry for 20 years. And this is reflected in the steadily increasing exhibition area and the growing numbers of trade visitors and first-time exhibitors.

Welcome to the world's leading trade fair for the rail industry – InnoTrans 2016 in Berlin.

Key figures
InnoTrans 2014



Exhibition segments

NEXT STOP: DIVERSITY AND INNOVATION

InnoTrans provides an international forum for companies, industry experts and professionals to share knowledge and ideas on current and ongoing trends. Innovative rail vehicles, new components and systems, the relevant infrastructure, and services for rolling stock are presented at InnoTrans in five exhibition segments.

RAILWAY TECHNOLOGY

- RAILBOUND VEHICLES FOR PUBLIC AND FREIGHT TRANSPORT
- SUBASSEMBLIES AND COMPONENTS: DRIVING GEARS, ENERGY/ELECTRICAL ENGINEERING, COUPLINGS, BRAKES, ETC.
- SERVICE FOR VEHICLES
- AND MUCH MORE

RAILWAY INFRASTRUCTURE

- CONSTRUCTION WORK
- SIGNALING AND CONTROL SYSTEMS
- PLANNING AND MONITORING OF CONSTRUCTION WORKS
- OVERHEAD LINE EQUIPMENT
- AND MUCH MORE

TUNNEL CONSTRUCTION

- TUNNEL BORING MACHINES
- CONSTRUCTION PRODUCTS, MACHINES AND COMPONENTS
- SAFETY FEATURES AND FINISHING
- COMMUNICATION AND MAINTENANCE SERVICES AND CONSULTING
- AND MUCH MORE

INTERIORS

- VEHICLE EQUIPMENT AND FINISHINGS
- LIGHTING AND GLAZING
- AIR CONDITIONING SYSTEMS
- SECURITY
- TRAVEL CATERING & COMFORT SERVICES
- AND MUCH MORE

PUBLIC TRANSPORT

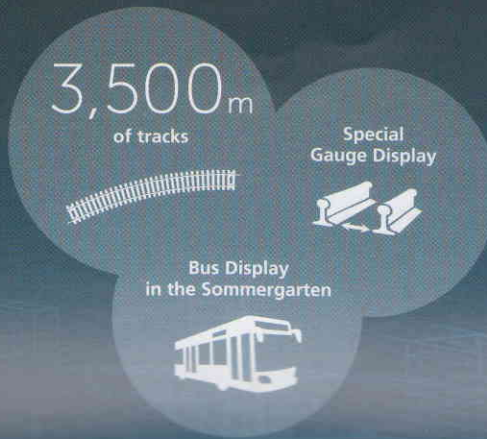
- COMMUNICATION AND INFORMATION TECHNOLOGIES
- TRAFFIC MANAGEMENT AND DATA PROCESSING
- PASSENGER FARE MANAGEMENT AND INFORMATION SYSTEMS
- FIXED STRUCTURES
- SERVICES AND CONSULTING
- AND MUCH MORE

Outdoor Display

ALL ABOARD FOR THE FUTURE

Visitors can experience rail transport innovations live in the unique Outdoor Display with 3,500m of tracks. Exhibits include rail vehicles for local, regional and long-distance transport. With the Special Gauge Display, InnoTrans lives up to its function as the world's leading trade fair and covers all special gauges from 1,000 to 1,520mm. For the first time, vehicle manufacturers will be presenting buses in a Static Display in the Sommergarten as well as in operation on the adjacent 500m Demonstration Course.

Free space for innovation



Target groups

ALWAYS THE RIGHT CONNECTION

With cutting edge products and services, InnoTrans attracted more than 133,000 trade visitors from 146 countries in 2014. The exhibition has become a permanent date in the industry's calendar and the leading global platform for building and maintaining business contacts.

Growing number of trade visitors



DIALOG WITH EXPERTS

PUBLIC AND PRIVATE TRANSPORT
COMPANIES AND OPERATORS
TRANSPORT TECHNOLOGY
MANUFACTURERS AND SUPPLIERS
CONSTRUCTION COMPANIES
ENGINEERS, GEOLOGISTS, MINERS
ADMINISTRATIONS, PUBLIC AUTHORITIES,
GOVERNMENT MINISTRIES
CONSULTANTS
TRADE ASSOCIATIONS AND INSTITUTIONS
SCIENCE, RESEARCH AND DEVELOPMENT
SHIPPING INDUSTRY
MEDIA
AND MUCH MORE

DISCUSSING WHAT DRIVES US

High-profile panel discussions with experts and international decision-makers ensure a spirited dialog focusing on future mobility themes.

The InnoTrans Convention's main event is the **Dialog Forum**, organized by the Association of German Transport Companies (VDV), the German Transport Forum (DVF), the Association of the European Rail Industry (UNIFE) and the German Railway Industry Association (VDB).

The Rail Leaders' Summit (RLS) promotes the dialog between transport ministries from around the world and CEOs from international transport companies. This event is organized by Deutsche Bahn AG,

the Federal Ministry of Transport and Digital Infrastructure and Messe Berlin GmbH.

The Tunnel Construction segment is supplemented by the **International Tunnel Forum** featuring a range of information-packed discussion forums with international speakers. It is organized by the German Research Association for Tunnel and Transportation Facilities (STUVA).

The **Public Transport Forum** focuses on developments in local public transport. It is organized by the Planungsbüro für Verkehr (PBV), ETC Transport Consultants GmbH and the German Association of Transport Sciences (DVWG).

The **International Taiwan Business Circle** enables top representatives from business, politics and associations to meet with Taiwan's transport and rail industry leaders. The perfect basis for building long-term management level partnerships (by invitation only).

Two segments come together in the **Public Transport & Interiors (PTI) Forum**. The **International Design Forum** with a focus on design themes in public transport, and the **DB Innovation Forum** with the question of how mobility can be made better and more sustainable through open innovation.

EVENT VENUES AT A GLANCE



DIALOG FORUM

Palais am Funkturm
North Entrance, Hall 19

RAIL LEADERS' SUMMIT PUBLIC TRANSPORT FORUM

Hall 7.3, Room Berlin
Hall 7 Entrance


INTERNATIONAL TUNNEL FORUM PUBLIC TRANSPORT & INTERIORS (PTI) FORUM INTERNATIONAL DESIGN FORUM DB INNOVATION FORUM

CityCube Berlin, Level 3
Entrance Messedamm




InnoTrans Convention

Rail Leaders' Summit (RLS), Hall 7.3 – Room Berlin Conference languages: German/English/Russian, by invitation only

20 Sept. 2016	3:00 p.m. – 5:00 p.m.	Innovation in the digital age: Rail faces the challenges of the future	Deutsche Bahn AG (DB AG)	Contact: Mr. Reiner Rodig (DB AG) reiner.rodig@deutschebahn.com	
				Contact: Ms. Claudia Schubert (DB AG) claudia.schubert@deutschebahn.com	

Dialog Forum, Palais am Funkturm Conference languages: German/English, free entrance for trade visitors

21 Sept. 2016	10:00 a.m. – 12:00 p.m.	Digitalisation in Passenger and Freight Rail Traffic – Solutions of the Railway Industry in Germany	German Railway Industry Association (VDB)	Contact: Ms. Franziska Rüsçh (VDB) ruesch@bahnindustrie.info	
	2:00 p.m. – 4:00 p.m.	Where are the Railways in the Innovation Competition in the Digital and Networked Age?	Association of German Transport Companies (VDV) and German Transport Forum (DVF)	Contact: Mr. Wolfgang Schwenk (VDV) schwenk@vdv.de	 
22 Sept. 2016	10:00 a.m. – 12:00 p.m.	Managing the long-term technical evolution and continued deployment of ERTMS	Association of the European Rail Industry (UNIFE)	Contact: Mr. John Harcus (UNIFE) john.harcus@unife.org	
	2:00 p.m. – 4:00 p.m.	#Mobility 4.0: Easy information, connections, booking and payment	German Transport Forum (DVF) and Association of German Transport Companies (VDV)	Contact: Ms. Irmgard Kirstgen (DVF) kirstgen@verkehrsforum.de	 
23 Sept. 2016	10:00 a.m. – 12:00 p.m.	Digital Service Technologies – from Spare Part Business to maintenance	German Railway Industry Association (VDB)	Contact: Ms. Franziska Rüsçh (VDB) ruesch@bahnindustrie.info	

Public Transport Forum, Hall 7.3 – Room Berlin Conference languages: German/English, free entrance for trade visitors

22 Sept. 2016 10:00 a.m. – 12:30 p.m. Public transport in 2030 – Challenges and strategic courses of action

ETC Transport Consultants GmbH, Planungsbüro für Verkehr (PBV) and German Association of Transport Sciences (DVWG)

Contact: Mr. Gernot Steinbrink (ETC Transport Consultants GmbH) gernot.steinbrink@etc-consult.de



International Tunnel Forum, CityCube Berlin – Level 3, M3 Conference languages: German/English, free entrance for trade visitors

21 Sept. 2016 2:00 p.m. – 4:00 p.m. BIM – An Added Value for Tunnelling?

German Research Association for Tunnel and Transportation Facilities (STUVA)

Contact: Dr.-Ing. Roland Leucker (STUVA) r.leucker@stuva.de



22 Sept. 2016 2:00 p.m. – 4:00 p.m. Underground Stations – A special Safety and Security Risk?

German Research Association for Tunnel and Transportation Facilities (STUVA)

Contact: Dr.-Ing. Roland Leucker (STUVA) r.leucker@stuva.de



Public Transport & Interiors (PTI) Forum, CityCube Berlin – Level 3, M1–M3 Conference languages: German/English, free entrance for trade visitors

International Design Forum

21 Sept. 2016 10:30 a.m. – 4:45 p.m. Experience Mobility – Focusing on the User: Innovative Concepts and Solutions for User Centered Design in Public Transport and Interiors

International Design Center Berlin (IDZ)

Contact: Ms. Daniela Gellner (IDZ) innotrans@idz.de



DB Innovation Forum

22 Sept. 2016 10:00 a.m. – 4:00 p.m. Open Innovation@InnoTrans – Creating a better and more sustainable mobility

Deutsche Bahn AG (DB AG)

Contact: Mr. Gregor Huhn (DB AG) gregor.huhn@deutschebahn.com



YOUR GUIDE AROUND THE TRADE FAIR

Airport shuttle service: A free shuttle bus travels at regular intervals between the airports and the exhibition grounds. You can also get to the exhibition grounds quickly by using public transport.

Business Lounge: Relax in the Marshall-Haus, join interesting conversations, use the free Wi-Fi, charge your electronic devices, or just unwind.

Career & Education Hall 7.1c: Opportunities for the next generation: The Career Pavilion and the Career Forum are the main meeting places for people entering the job market. This is also the point of departure for the guided Career Tours for students. These take participants to the Career Point exhibitors

in the exhibition halls where the companies provide information on career opportunities.

NEW Conference Corner: Associations and transport companies can hold conferences in halls 14.2/15.2. MAGLEV 2016 will be held here from 23-26 September. The theme is "Maglev Solutions for People, Cities, and Regions?" (separate participation fee, www.maglevboard.net).

Entrances: The exhibition grounds can be accessed via seven entrances; all are close to public transport stations and served by our shuttle service.

Event database: A wide range of interesting events awaits you. Further details and the daily program are also available to download: www.innotrans.com/Events

Fairground shuttle: Your personal shuttle service on the exhibition grounds. Convenient and free of charge throughout the day.



Future Mobility Park: A central platform for pioneering mass mobility projects where visionaries and developers present their ideas to industry experts, located in the hall 20/21 passageway.

InnoTrans App: For up-to-date information and finding your way around the exhibition grounds – this app puts InnoTrans 2016 in your pocket.

Innovation Tours: Discover new products and services first hand. Each tour lasts approx. 90 minutes, is related to the themes of the InnoTrans segments, and takes place several times daily in English and German. Registration: Business Lounge in the Marshall-Haus.

Restaurant "Oktoberfestzelt": Oktoberfest celebrations will be held again this year at the Berlin exhibition grounds. Take time out the hustle and bustle of the trade fair and enjoy some real Bavarian food

before returning to your agenda. Exclusive reservations also available.

Online tickets: Online tickets are available at a reduced rate. These tickets entitle you to free public transport on the given day and ensure that you avoid delays at the entrance gates.

www.innotrans.com/ticketshop

On-site registration: Trade visitors without an online ticket are requested to use the East Entrance or Hall 9 Entrance.

Speakers' Corner: Stop by the Speakers' Corner in halls 14.2/15.2 and listen to different exhibitors presenting their innovations, products and companies in the style of the famous London institution in Hyde Park.

REDUCED-RATE ONLINE TICKET

Travel Catering & Comfort Services: Good food and physical comfort are important factors, especially when competing for passengers. A dedicated Travel Catering & Comfort Services thematic route showcases the latest trends in this segment at the relevant stands in hall 1.1.

Virtual Market Place®: An online platform for exhibitors and trade visitors to keep in touch. Industry experts can find information here 365 days a year. The Trade Fair Planner and Online Job Market are particularly practical features.

More at www.virtualmarket.innotrans.com

Out and about

FIRST CLASS IN BERLIN

Take a breath of Berlin night air after a successful day at the trade fair. The vibrant metropolis offers a wide variety of gourmet restaurants, comfy pubs and cultural events. The capital comes alive in the evening with musicals, plays, exhibitions and concerts. Berlin is like no other city in the world. We look forward to welcoming you here. For more Berlin information, visit www.visitberlin.de/en.



AT A GLANCE

InnoTrans trade visitor hotline
T +49 30 3038 3131

You can also contact the Messe
Berlin representative office in your
country at any time:
www.innotrans.com > contact

Organizer

Messe Berlin GmbH
Messedamm 22, 14055 Berlin
innotrans@messe-berlin.de
www.innotrans.com

Dates

20–23 September 2016

Hours

9:00 a.m. – 6:00 p.m.

Catalogue orders

Beginning 23 September 2016,
via MB Capital Services GmbH:
kartenservice@messe-berlin.de

Admission price incl. catalogue

Day ticket: EUR 45 online,
EUR 80 on-site

Permanent ticket: EUR 65 online,
EUR 100 on-site

Online tickets

Admission tickets
are valid for public
transport in Berlin (ABC destinations).
www.innotrans.com/ticketshop

REDUCED-
RATE
ONLINE
TICKET

Travel service

Complete information on getting
to and from the venue, overnight
accommodation and much more:
www.innotrans.com > Visitors
> YourVisit

**We recommend using
public transport.**



- Railway Technology
- Interiors incl. Travel Catering & Comfort Services
- Railway Infrastructure
- Tunnel Construction
- Public Transport
- Outdoor Display
- Bus Display
- Special Gauge Display
- Opening Ceremony
- InnoTrans Convention incl. PTI Forum
- Speakers' Corner
- Conference Corner
- Career & Education Hall
- Business Lounge (Marshall-Haus)
- Press Center
- Restaurant "Oktoberfestzelt"
- Restaurant "Meet 'n' Eat"

ENTRANCE HALL 9 ON-SITE REGISTRATION
 HALL 8 TO 10
 S-BAHN STATION "WESTKREUZ"
 (S7, S41, S42, S46, S5, S75)
 BUS 104, 349

EAST ENTRANCE ON-SITE REGISTRATION
 HALL 11 TO 17
 S-BAHN STATION "MESSE NORD/ICC"
 (S41, S42, S46)
 U-BAHN STATION "KAISERDAMM" (U2)
 BUS M49, X49, 104, 139, 218, 349

NORTH ENTRANCE, HALL 18 TO 26
 S-BAHN STATION "MESSE NORD/ICC"
 (S41, S42, S46)
 U-BAHN STATION "THEODOR-HEUSS-PLATZ"
 (U2)
 BUS M49, X49, 104, 139, 218, 349

SOUTH ENTRANCE, HALL 1, 2.1, 3, 4.1, 5, 6.1
 S-BAHN STATION "MESSE SÜD" (S5)
 BUS 349

ENTRANCE HALL 7, HALLE 2.2, 4.2, 6.2, 7
 S-BAHN STATION "MESSE SÜD" (S5)
 BUS 349

ENTRANCE CITYCUBE BERLIN,
 JAFFESTRASSE (HALL A) AND
 MESSE DAMM (HALL B)
 S-BAHN STATION "MESSE SÜD" (S5)
 BUS 349

Fairground Shuttle ■ South Entrance – Hall 18, ■ South Entrance – Hall 20
■ South Entrance – East Entrance, ■ East Entrance – Outdoor Display

Shuttle Lines
■ M1 – Olympischer Platz P+R, ■ M2N – Airport Tegel – Expo North
■ M2S – Airport Tegel – Expo South, ■ M3N – Airport Schönefeld – Expo North
■ M3N – Airport Schönefeld – Expo South, ■ HB – Hotel Transfer, ■ CI – City Transfer