

Mašinski fakultet Banjaluka

Ime i prezime:

Datum:

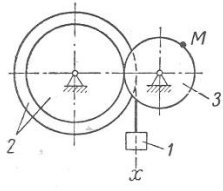
MEHANIKA II

Određivanje brzine i ubrzanja tačke tijela koje se obrće oko nepokretne ose

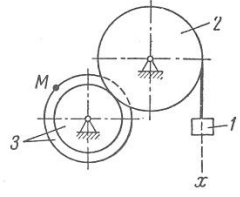
Prema zadatoj jednačini pravolinijskog translatornog kretanja tereta 1, potrebno je odrediti brzinu, tangencijalno, normalno i ukupno ubrzanje tačke M, u trenutku kada je put koji je prevalio teret 1 jednak s .

Varijanta (sl. K-3a, b, c)	Polumjeri, cm				Jednadžbe gibanja tereta I $x = x(t)$ (x u cm, t u s)	s , m
	R_2	r_2	R_3	r_3		
1	60	45	36	—	$10 + 100t^2$	0,5
2	80	—	60	45	$80t^2$	0,1
3	100	60	75	—	$18 + 70t^2$	0,2
4	58	45	60	—	$50t^2$	0,5
5	80	—	45	30	$8 + 40t^2$	0,1
6	100	60	30	—	$5 + 60t^2$	0,5
7	45	35	105	—	$7 + 90t^2$	0,2
8	35	10	10	—	$4 + 30t^2$	0,5
9	40	30	15	—	$3 + 80t^2$	0,2
10	15	—	40	35	$70t^2$	0,4
11	40	25	20	—	$5 + 40t^2$	0,3
12	20	15	10	—	$2 + 50t^2$	0,1
13	30	20	40	—	$60t^2$	0,4
14	15	10	15	—	$6 + 20t$	0,1
15	15	10	15	—	$8 + 40t^2$	0,3
16	20	15	15	—	$3 + 40t^2$	0,4
17	15	10	20	—	$80t^2$	0,6
18	20	15	10	—	$4 + 20t$	0,3
19	15	10	20	—	$5 + 80t^2$	0,2
20	25	15	10	—	$50t^2$	0,3
21	20	10	30	10	$4 + 90t^2$	0,5
22	40	20	35	—	$10 + 40t^2$	0,5
23	40	30	30	15	$7 + 40t$	0,6
24	30	15	40	20	$90t^2$	0,2
25	50	20	60	—	$2 + 50t$	0,5
26	32	16	32	16	$5 + 60t^2$	0,1
27	40	18	40	18	$6 + 30t^2$	0,3
28	40	20	40	15	$50t^2$	0,4
29	25	20	50	25	$3 + 30t$	0,6
30	30	15	20	—	$5 + 60t^2$	0,2

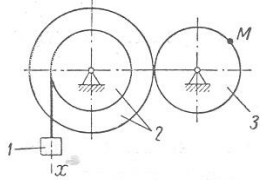
1



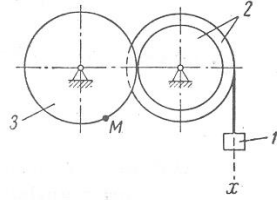
2



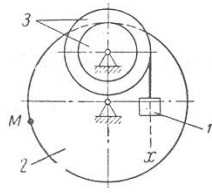
3



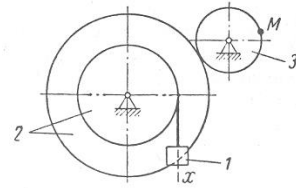
4



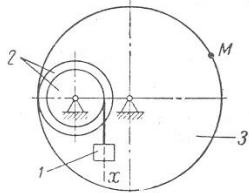
5



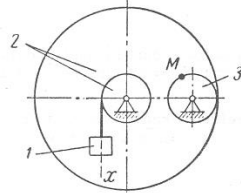
6



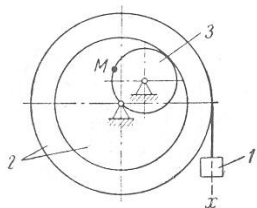
7



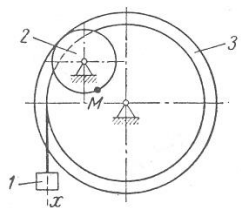
8



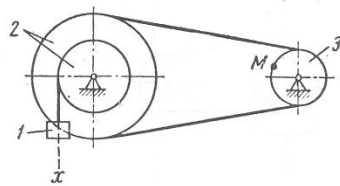
9



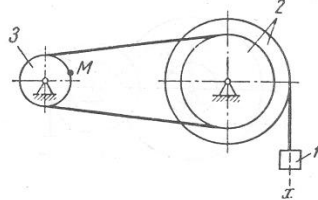
10



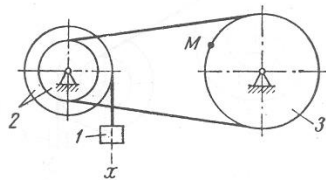
11



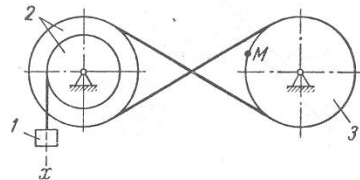
12



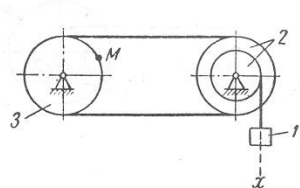
13



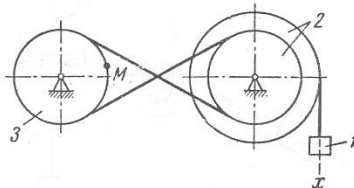
14



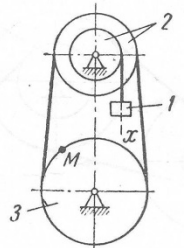
15



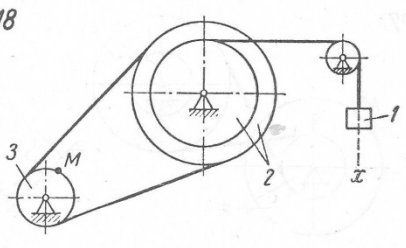
16



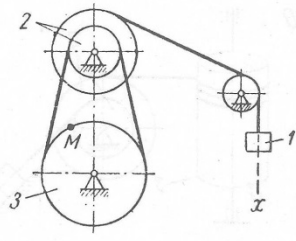
17



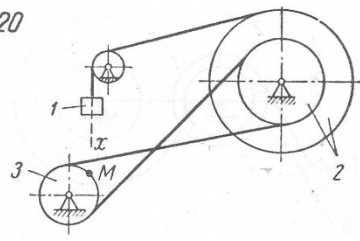
18



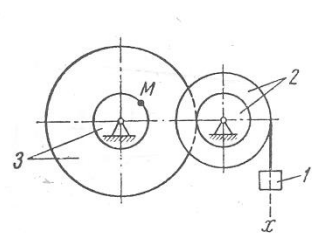
19



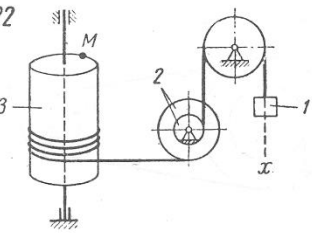
20



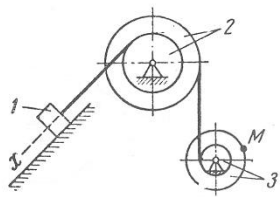
21



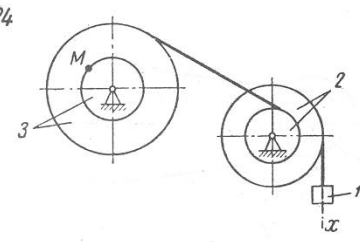
22



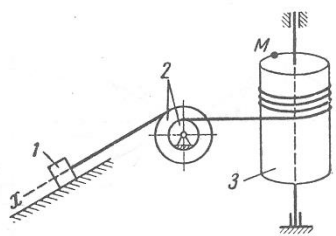
23



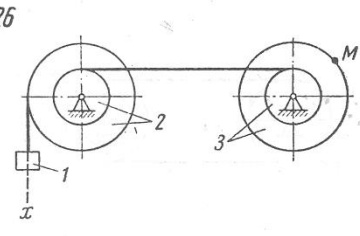
24



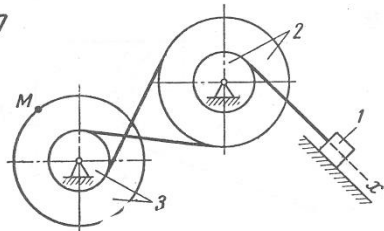
25



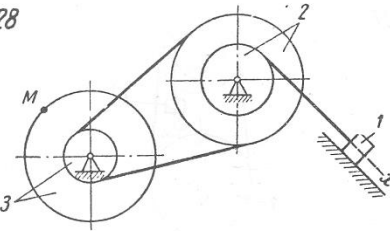
26



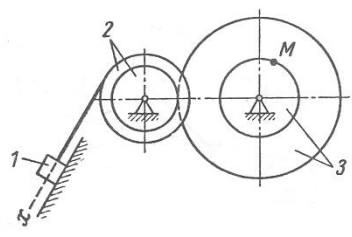
27



28



29



30

